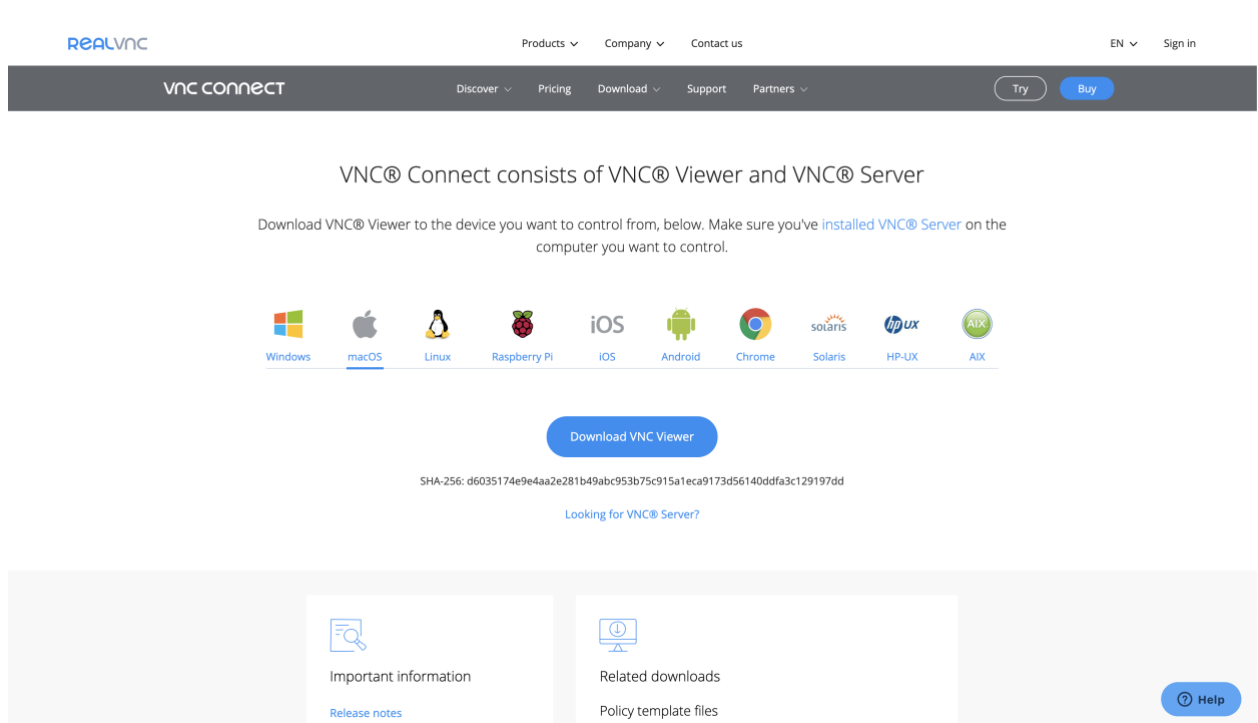


Virtual Access to SEASCF MacOS Computer lab (TH-410):

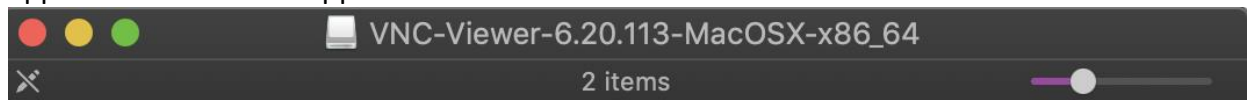
From MacOS to MacOS:

1. Connect to the [GW VPN](#)
2. Download VNC Viewer at <https://www.realvnc.com/en/connect/download/viewer/macos/>

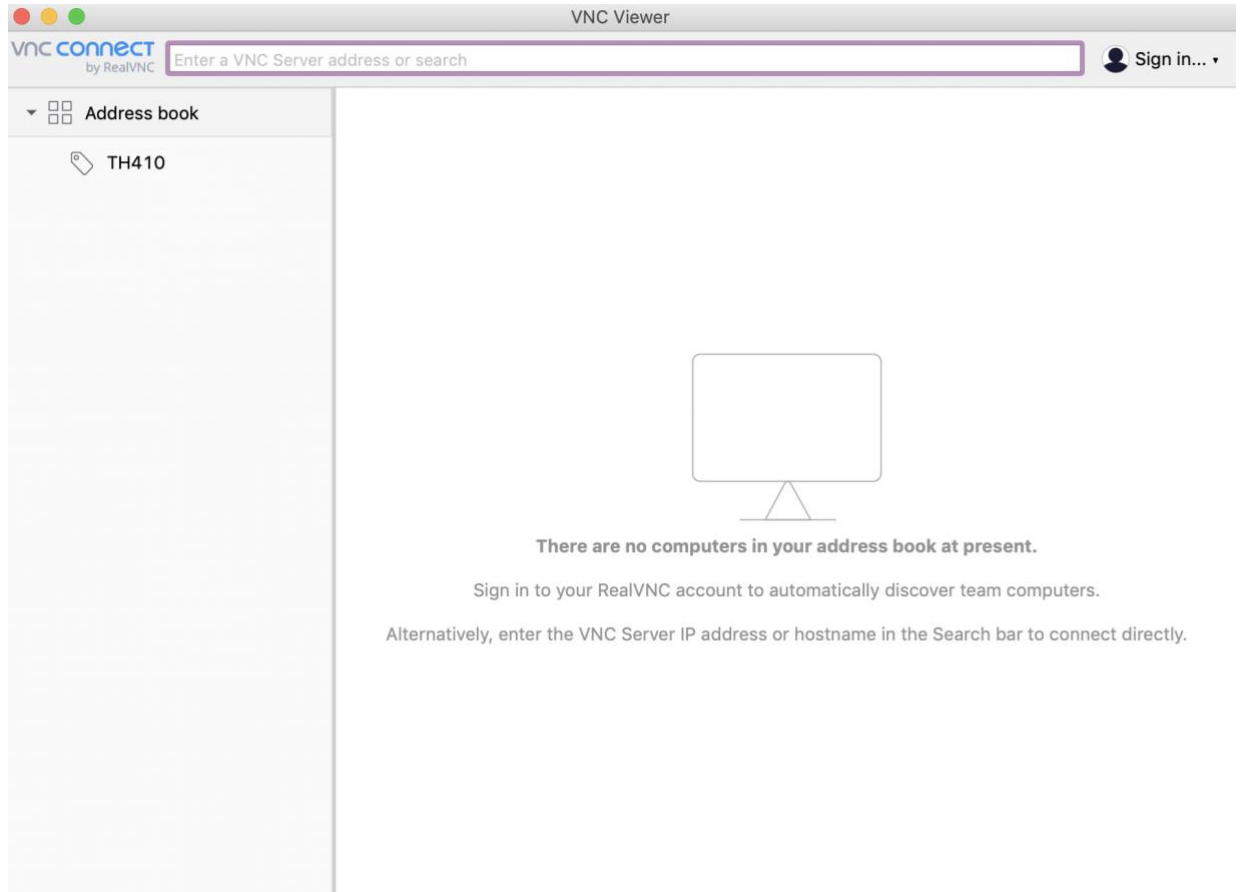


The screenshot shows the RealVNC website's download page for macOS. The page features a navigation bar with 'vnc connect' and various menu items. The main content area includes the text 'VNC® Connect consists of VNC® Viewer and VNC® Server' and a prompt to download the viewer. Below this, there are icons for various operating systems, with 'macOS' highlighted. A prominent blue button labeled 'Download VNC Viewer' is centered on the page. Below the button, a SHA-256 hash is displayed, and a link for 'Looking for VNC® Server?' is provided. At the bottom, there are sections for 'Important information' (with a 'Release notes' link) and 'Related downloads' (with a 'Policy template files' link). A 'Help' button is located in the bottom right corner.

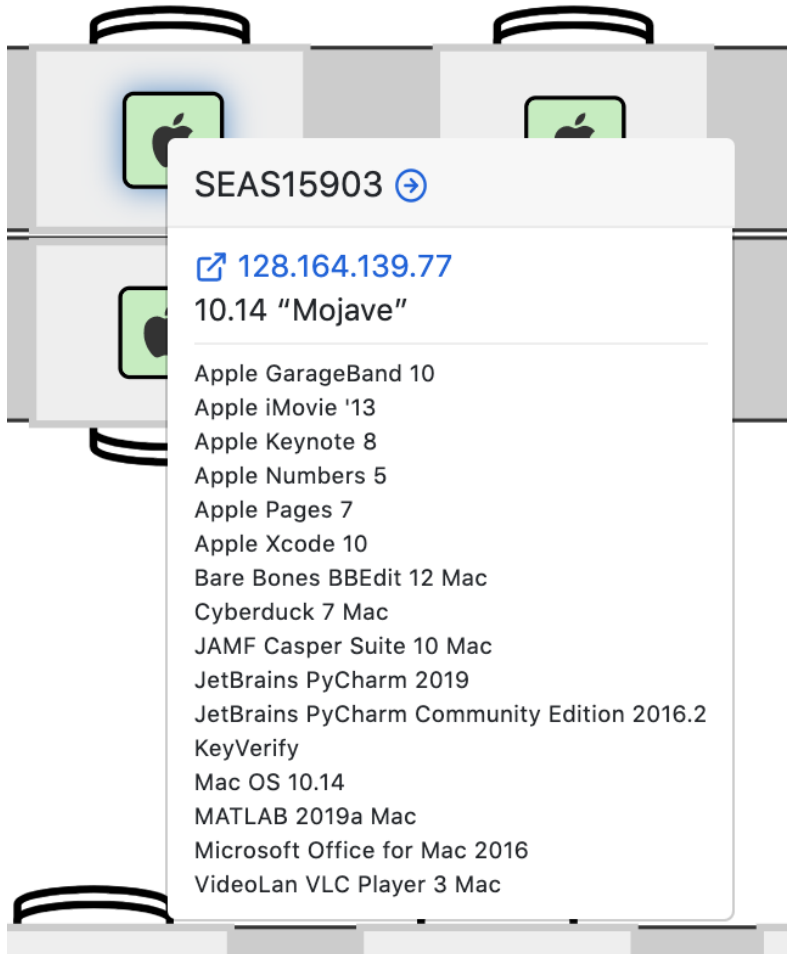
3. Click on the .dmg file that downloads to install the application (VNC Viewer). Drag the application icon to the application folder:



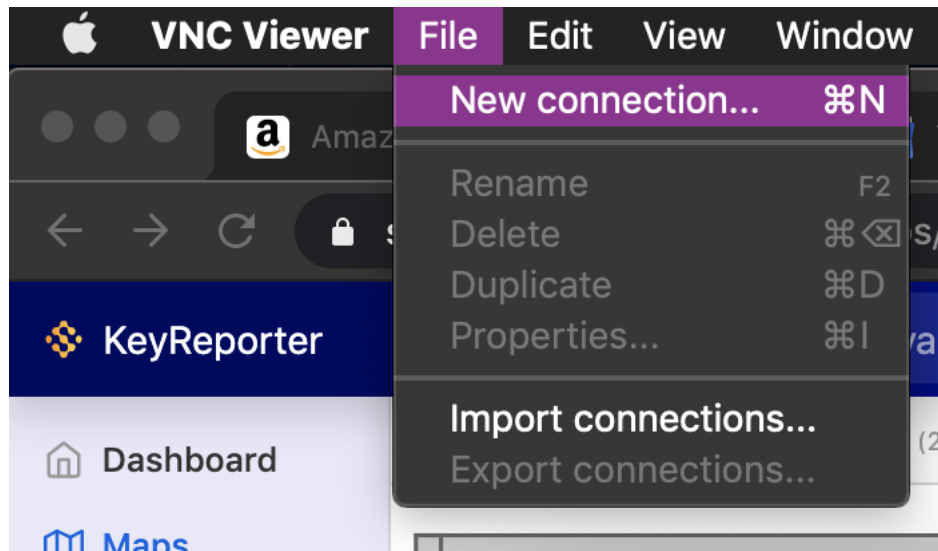
4. Select VNC Viewer from your applications folder to start the app. You should see the below window



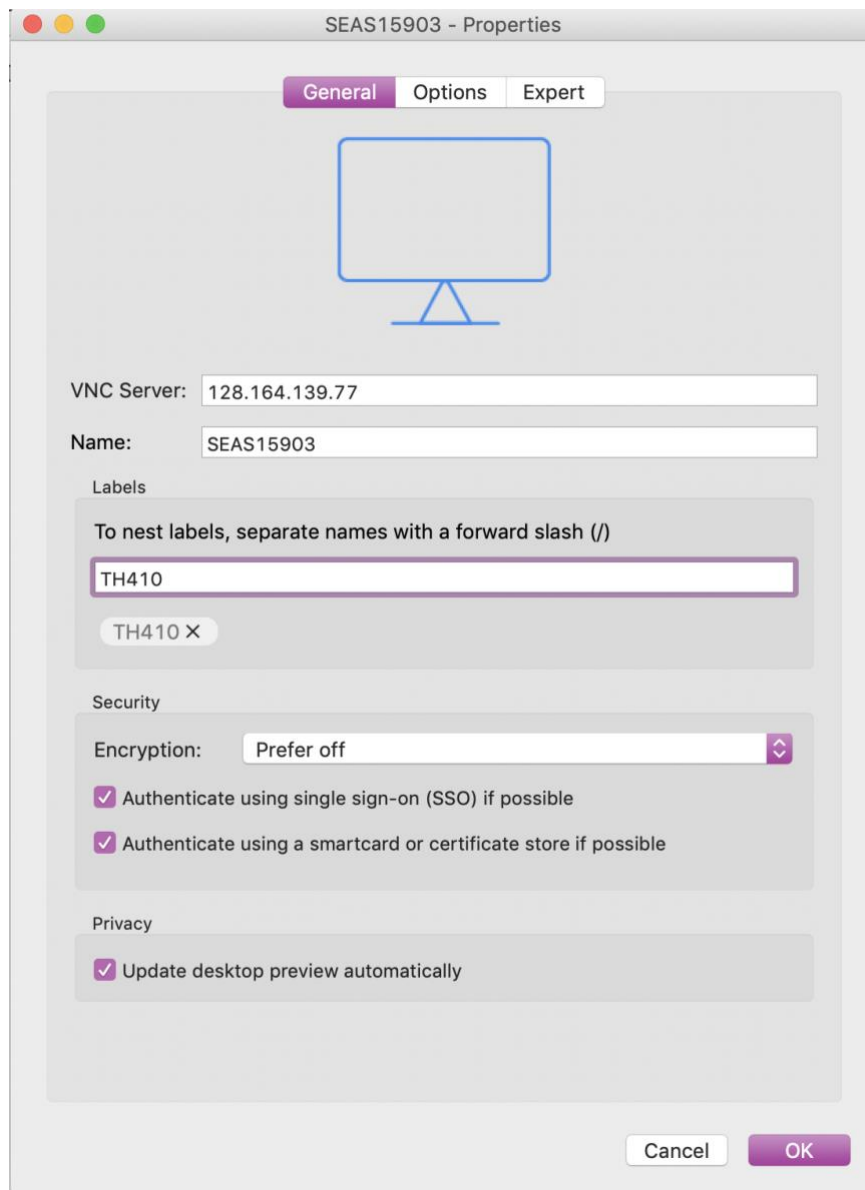
4. Click on the [Tompkins 410](#) link here or on <https://seascf.seas.gwu.edu/remote-access-labs>. Select any available computer and go back to VNC Viewer.



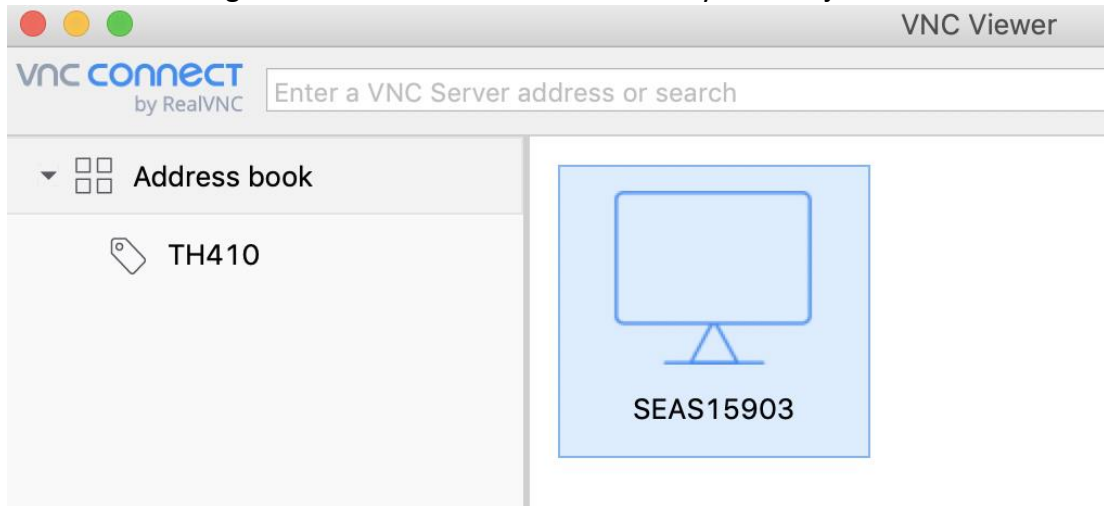
5. Click File > New connection..



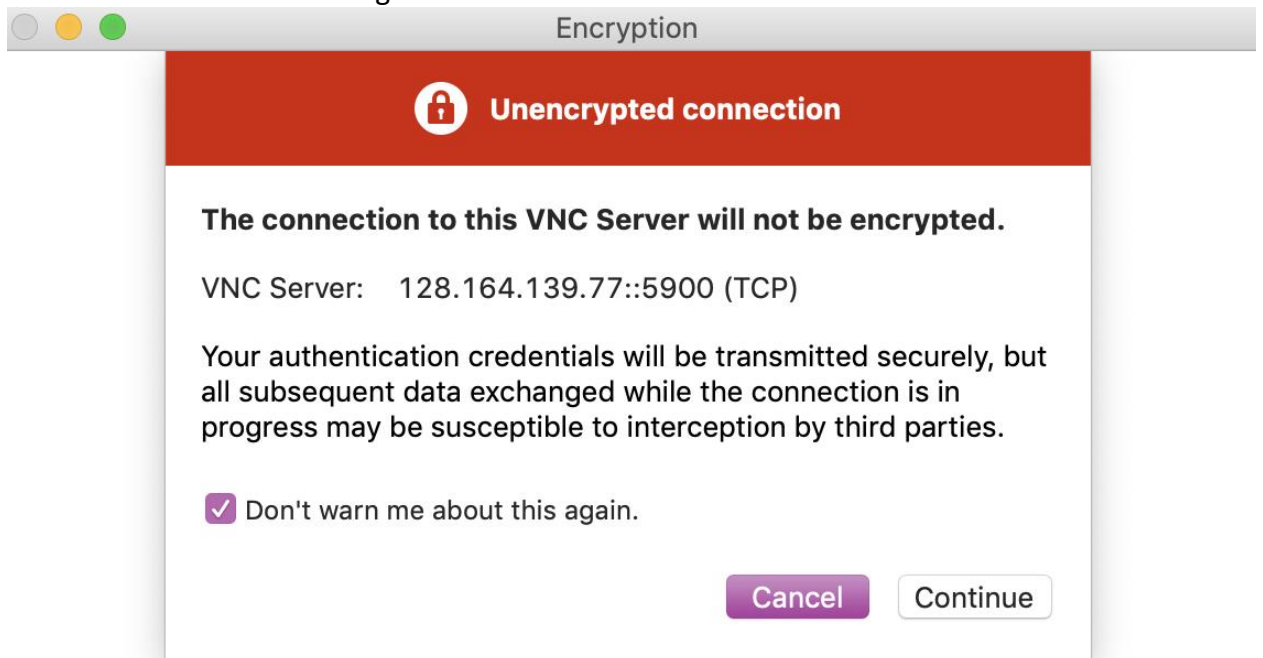
6. Fill out the General properties:
 - a. **VNC Server:** e.g. 128.164.139.77 (IP Address of the computer you are remotely connecting to)
 - b. **Name:** e.g. SEAS15903
 - c. **Labels:** TH410
 - d. **Encryption:** Prefer Off (select using drop down arrow)
7. Select **Ok**.



8. Double click or right-click Connect on the connection you have just created:

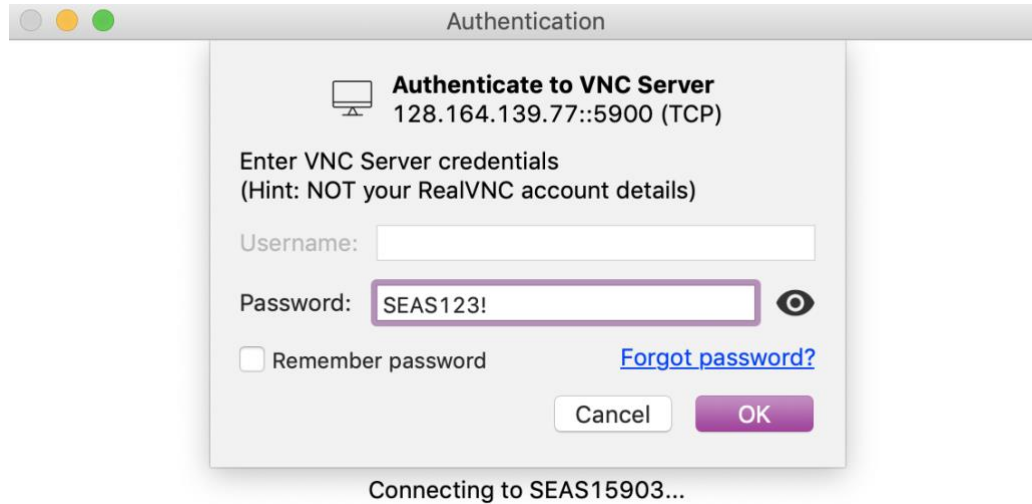


9. You will see a warning that the connection will not be encrypted. Please check "Don't warn me about this again" and click **Continue**.

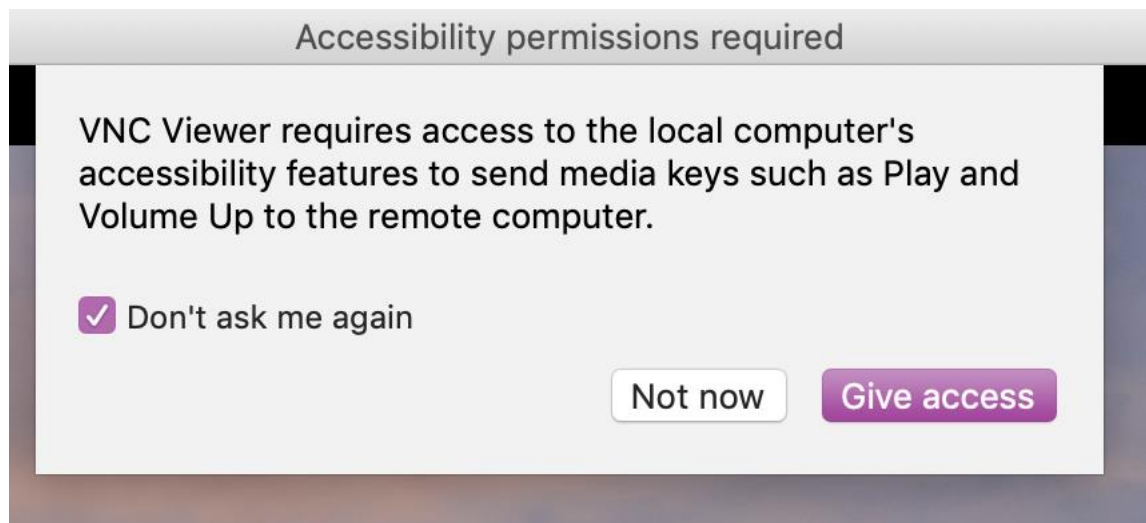


Stop

10. Please enter the **Password: SEAS123!**



11. Click **Ok**. You will be connected shortly.
12. VNC will send a notification asking you to enable accessibility through VNC on your local machine so that certain keyboard options will be available while you are remotely connected. For ease of use, Check **Don't ask me again** and Click **Give access**.



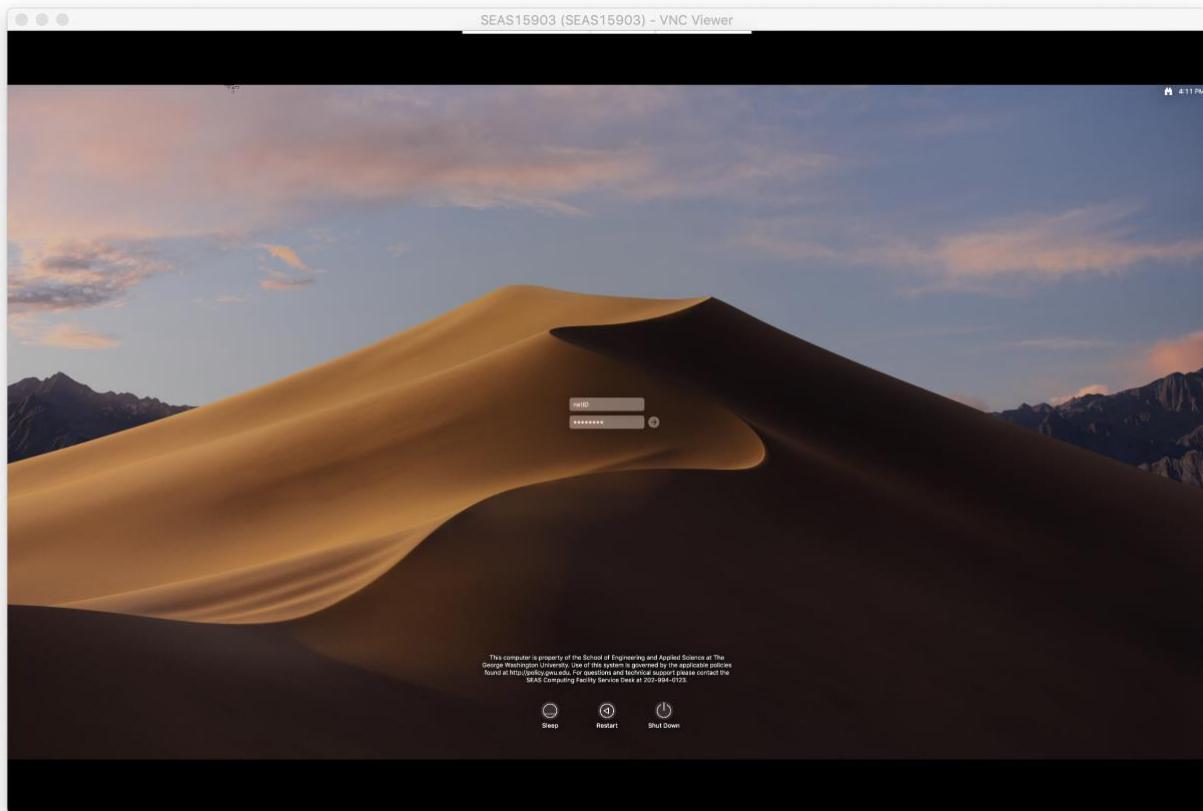
13. Unlock your settings and check the box next to VNC Viewer:



14. Return to your VNC connection:



15. Sign in with your GW NetID and password as you would in the lab:



When you are finished, please **sign out!** (not shut down)